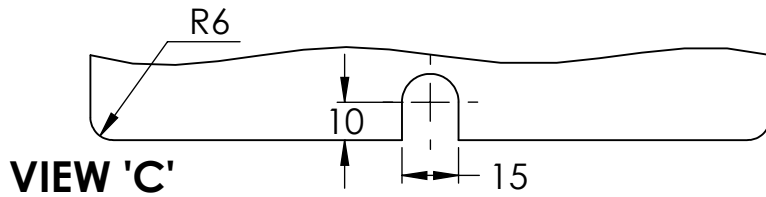


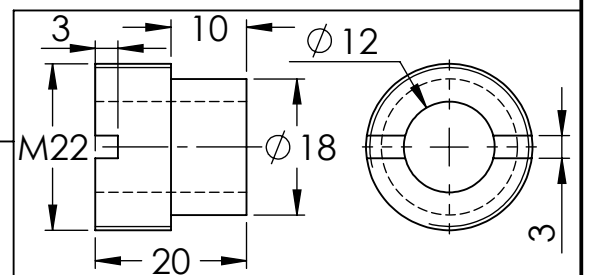
ELEV.

SIDE VIEW

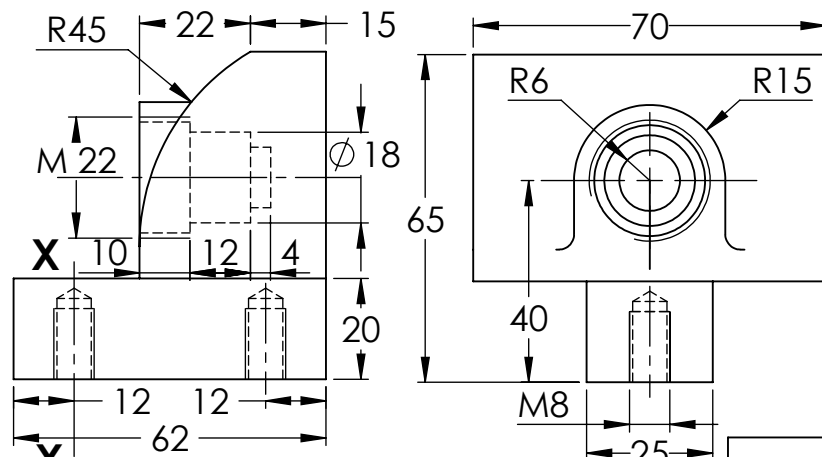
BASE (C.I.) NO. OFF 1



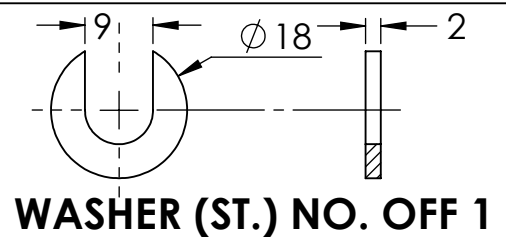
VIEW 'C'



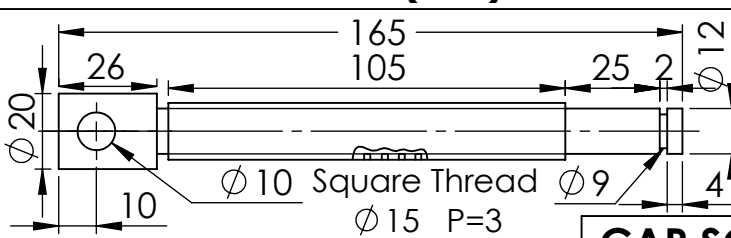
BUSHING (ST.) NO. OFF 1



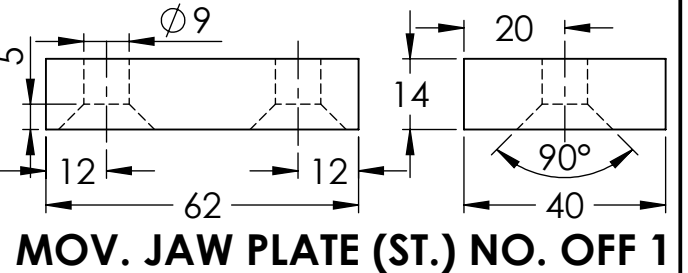
MOVABLE JAW (C.I.) NO. OFF 1



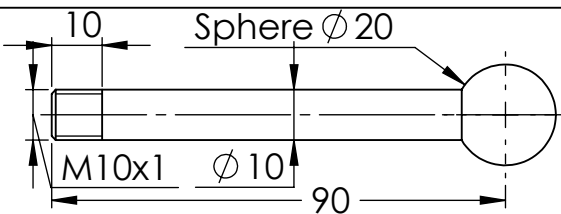
WASHER (ST.) NO. OFF 1



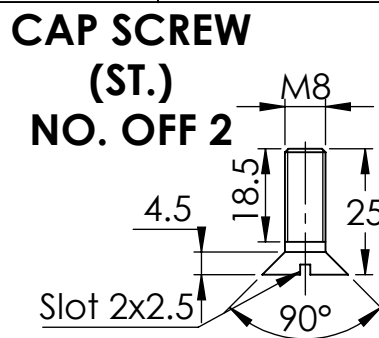
SCREW (ST.) NO. OFF 1



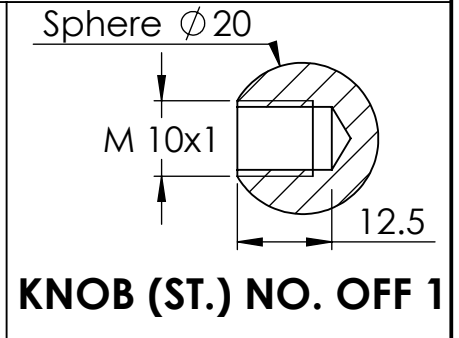
MOV. JAW PLATE (ST.) NO. OFF 1



HANDLE (ST.) NO. OFF 1



CAP SCREW (ST.) NO. OFF 2



KNOB (ST.) NO. OFF 1

You are given the details of a VICE. Assemble all parts such that the plane (X-X) shown in the base coincides with that of the movable jaw. Draw the following:

1. SEC. ELEV. 2. H. SEC. SIDE VIEW 3. PLAN

Dimensions are in mm and all unspecified radius are 2 mm.